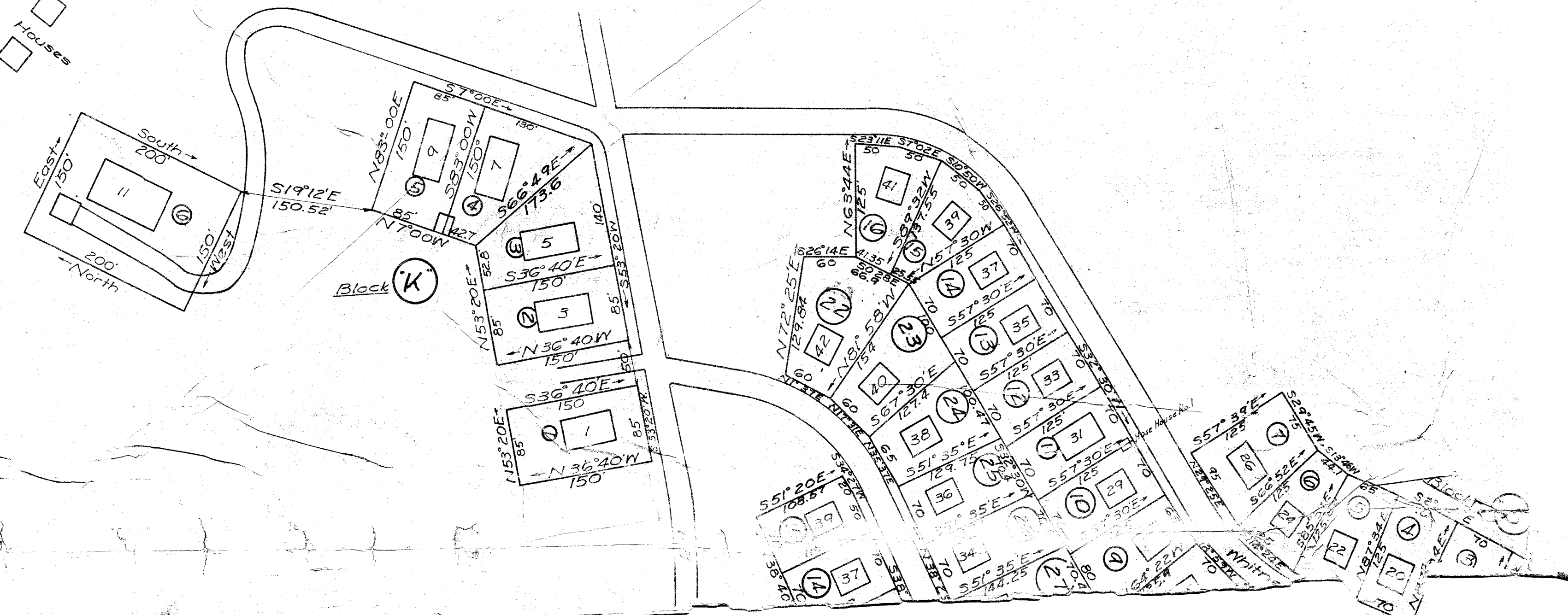


Negro Houses

1000  
6000  
5000





N 68° 01' E 3211.85'

R.D. Jarrard

5000

0.5 Ac.

Church of God

Talley

N 74° 44' E 804.72'

N 8° 35' W 264.10'

N 81° 03' E 215.83'

B.F. Johnson

1/4 Iron Pipe  
N 9° 44' W 778.85'

N 86° 49' W 700.89'

1/4 Iron Pipe

Cleveland Hrs. et al

N 9° 02' W 814.82'

Cleveland

G.&N. R.R.

Conc. Mon.  
Road

5000

5000

8000

241

City of Bds.  
Conveyed as of July 12, 1940 - 58.5 Ac.  
Total 452.4 Ac.

NOTE:  
Iron pins set at all lot  
corners, unless otherwise shown.

